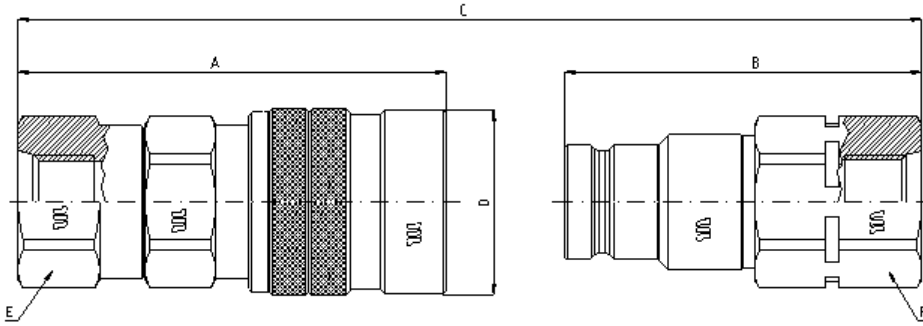
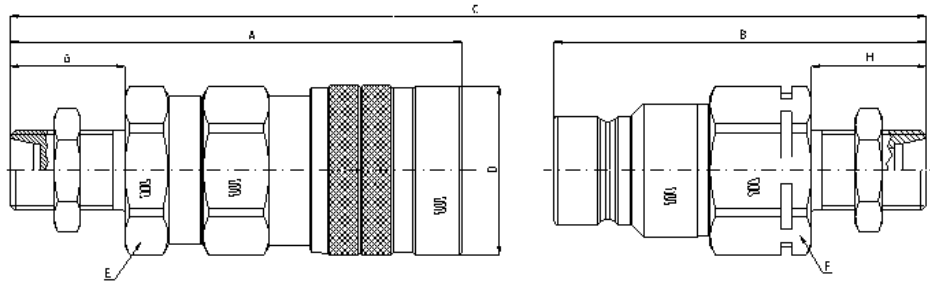


METRIC

Q0411191A
Q0391191A
METRIC TERMINATION ENDS
TO ISO 6149-1



SIZE			PART NUMBER		THREAD	DIMENSIONS mm							
DN	inch	Size	Female coupling	Male coupling		A	B	C	D	E	F		
10	3/8"	-06	Q0411191A-06-16	Q0391191A-06-16	M16x1,5	75.4	63	A+B-15,9	ø32	27	27		
			Q0411191A-06-18	Q0391191A-06-18	M18x1,5	76.9	64.5	A+B-15,9	ø32	27	27		



Q0411770B
Q0391770B
METRIC TERMINATION END
TO ISO 8434-1
BULKHEAD L SERIES

SIZE			PART NUMBER		THREAD	DIMENSIONS mm							
DN	inch	Size	Female coupling	Male coupling		A	B	C	D	E	F	G	H
6.3	1/4"	-04	Q0411770B-04-12	Q0391770B-04-12	M12x1,5	82.6	65.1	A+B-11,1	ø28	24	22	25	25
			Q0411770B-04-14	Q0391770B-04-14	M14x1,5	82.6	64.1	A+B-11,1	ø28	24	22	25	25
			Q0411770B-04-16	Q0391770B-04-16	M16x1,5	83.6	64.1	A+B-11,1	ø28	24	22	26	26
10	3/8"	-06	Q0411770B-06-16	Q0391770B-06-16	M16x1,5	93.9	76.5	A+B-15,9	ø32	27	27	26	26
			Q0411770B-06-18	Q0391770B-06-18	M18x1,5	93.9	76.5	A+B-15,9	ø32	27	27	26	26
			Q0411770B-06-22	Q0391770B-06-22	M22x1,5	94.9	77.5	A+B-15,9	ø32	27	27	27	27
12.5	1/2"	-08	Q0411770B-08-18	Q0391770B-08-18	M18x1,5	101.7	86.5	A+B-17,1	ø38	34	34	26	26
			Q0411770B-08-22	Q0391770B-08-22	M22x1,5	102.7	87.5	A+B-17,1	ø38	34	34	27	27
			Q0411770B-08-26	Q0391770B-08-26	M26x1,5	103.7	88.5	A+B-17,1	ø38	34	34	28	28
20	3/4"	-12	Q0411770B-12-26	Q0391770B-12-26	M26x1,5	114.9	102.5	A+B-21,7	ø48	41	41	29	29
			Q0411770B-12-30	Q0391770B-12-30	M30x2	118.9	106.5	A+B-21,7	ø48	41	41	32	32